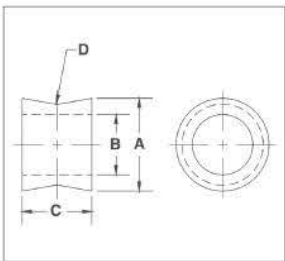




S-255



**S-255 Spool**

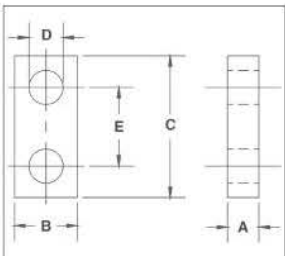
- Designed to keep the load centered on the pin, which keeps the sling positioned correctly in the shackle bow.

Working Load Limit (t)	S-255 Stock No.	Weight Each (kg)	Dimensions (mm)			
			A	B	C	D
3.25	1020903	0.15	31.8	20.6	19.1	4.85
6.5	1020912	0.26	38.1	23.9	25.4	6.35
8.75	1020921	0.40	44.5	26.7	30.2	7.85
12.5	1020930	0.66	51.0	33.3	38.1	9.65
20.5	1020939	1.27	63.5	41.4	47.8	11.2
35	1020948	1.09	82.5	54.0	57.0	12.7
50	1020957	1.84	95.5	60.5	70.0	15.7

\* 5:1 Design Factor



S-256



**S-256 Link Plate**

- Designed to connect two (2) S-252 or S-253 Sling Saver Shackles together.

Working Load Limit (t)	S-256 Stock No.	Weight Each (kg)	Dimensions (mm)				
			A	B	C	D	E
3.25	1020785	.38	19.1	38.1	86.0	20.6	47.8
6.5	1020796	.73	25.4	44.5	105	23.9	57.0
8.75	1020807	1.23	31.8	51.0	121	26.9	66.5
12.5	1020818	2.35	38.1	63.5	152	33.3	85.6
20.5	1020829	3.71	44.5	76.0	178	41.1	95.5
35	1020840	7.80	51.0	102	235	54.0	127
50	1020851	17.0	73.1	127	267	60.5	146

\* 5:1 Design Factor



SYNTHETIC SLING FITTINGS